



**NEW ENGLAND CHAPTER  
QUARTERLY NEWSLETTER  
Fall 2011**

<b>IN THE NEWS</b>	
HONOR FOR NEC MEMBER	1-2
PRESIDENT'S MESSAGE	2
STATE REPORTS	3-5
WTCW2	7
ITEMS THAT NEED YOUR VOTE	8
MAINE PHOTO CONTEST	11
2011 SLATE OF OFFICERS	13
UPCOMING EVENTS	14
CONFERENCE REGISTRATION FORM	15-16

**New England Chapter Member and U-Mass Professor Honored with Award from International Society of Arboriculture**

*ISA PRESS RELEASE*

NEC Member, Dr. Brian Kane, an associate professor and researcher at the University of Massachusetts-Amherst, is this year's recipient of the International Society of Arboriculture's (ISA) prestigious Early Career Science Award. The Early Career Scientist Award is given to professionals showing exceptional promise with the potential for becoming internationally known for their work. ISA President, Tim Gamma, honored Kane at a ceremony on Sunday, July 24 in Sydney, Australia as part of the ISA Annual Conference and Trade Show, held July 23—27, 2011.



"Dr. Kane's studies on pruning trees and worker safety are changing arboriculture right now," says Gamma. "His accomplishments come with less than 12 years as a post-graduate scientist; a remarkably short time for completing experiments critical to our industry." Dr. Kane is well-respected for his studies on tree biomechanics and risk assessment. He is credited with improving arboriculture practice and worker safety through his research.

"I thank all of the arborists who have inspired many of the projects I've worked on," says Dr. Kane. "It's an incentive to work harder and continue trying to work on projects that will help arborists do their jobs better and more safely."

Kane is one of eight distinguished professionals who make up the circle of winners for ISA's Awards of Distinction, sponsored by Bartlett Tree Experts. Robert Bartlett Jr., Chairman and CEO of Bartlett Tree Experts explains, "By recognizing those individuals who have a positive impact on

✉ : [heather@newenglandisa.org](mailto:heather@newenglandisa.org)  
☎ : 978-844-0441



arboriculture, ISA helps provide role models and learning opportunities for all of us. The Awards of Distinction raise the bar, pushing us to continue to learn and grow.”

ISA has been honoring members and industry professionals with the Awards of Distinction since 1963. Nine categories recognize candidates in such areas as research, publishing, education, and advancing the cause of the organization. The winners are selected by a diverse group of experts in arboriculture. More than 20,000 members make up ISA’s organization worldwide.

## PRESIDENT’S MESSAGE

*By Tom Hoerth*

Greetings Chapter Members and Friends! This coming Friday, September 24, will welcome in the Fall season. I got back last night from a three-day visit to an island located in West Grand Lake, in Washington County, Maine. Both mornings I awoke to frost on the tent and a fog bank winding over the lake’s surface, as the water temperature was incredibly warm and still quite swimmable. The island is home to a camp where my wife and I met and where both our daughters attended and worked. The forest on the island was not spared by Irene and other severe wind storms we experienced this Summer. I am reminded that our charge of being urban tree stewards should include the consideration that we are attempting to replicate conditions found in our woods and natural areas in man-made, disturbed environments. The comprehensive simplicity of these natural environments gives me constant guidance and direction, as I work with my own City Public Works Departments, Planning Boards and local Tree Board, as well as with developers, contractors and homeowners. There still exists a vast need to work with and educate people about how these systems work and how to better manage their resources and assets by working to replicate more native conditions. These steps can realize improved environmental benefits from these resources and assets. We, as professional arborists, continue to be needed and are necessary practitioners of an ever more vital skill-set. I tip my helmet to you all!



It was only four months ago on May 7th but it seems so long ago when the Chapter held its Tree Climbing Championship up here at Bowdoin College, in Brunswick. Bear LeVangie and Danny Weise are our champions and they competed at the International level on July 23rd & 24th in Parramatta, Australia. Both represented the New England Chapter well and it was a great honor and privilege for me to be able to watch them compete!

This is my last Presidential Message, so I wanted to say Thank You for this opportunity and recommend that if you wish to be a part of the Chapter’s Board, to step up and make things happen! Your energy, ideas, and experience are always needed, welcomed and is what drives this organization.

Now that it is mid-September and the temperatures are cooling down, remember that the NEC-ISA 45<sup>th</sup> Annual Conference and Tradeshow will be here before you know it. I hope to see you there October 22nd – 25th in Bath, Maine at the Maine Maritime Museum.

Best,

Tom Hoerth, President NEC-ISA

✉ : [heather@newenglandisa.org](mailto:heather@newenglandisa.org)

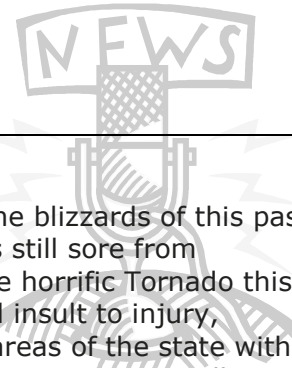
☎ : 978-844-0441



**STATE REPORTS & NEWS**



**CONNECTICUT:** *Greg Lukos* [glukos@hvmaster.com](mailto:glukos@hvmaster.com)



Blizzards, Tornado's and Hurricanes...Oh My!

The weather sure has been the headliner in this memorable year of 2011. The blizzards of this past winter with ice dam's galore are still vivid in my mind; in fact my shoulder is still sore from chopping ice off my roof! Those of you in Mass. need not be reminded of the horrific Tornado this past June in Springfield that I assume you are still cleaning up from. To add insult to injury, Hurricane Irene slammed us badly in Western Connecticut and many other areas of the state with 800,000 homes without power for days. This photo is one of the 2,580 homes in Heritage Village that Irene disagreed with.



In other news, The CTPA summer meeting went well with several hundred state arborists in attendance. Topics included a very informative talk by Danny Rodriquez, Brian Carpenter, and Charlie Islien on Tree Climbing techniques. Arboriculture 101 classes are set to begin in September, and a "Trees and the Law" workshop is scheduled for

October 4th in Plantsville at the Aqua Turf (ISA credits pending). Check the CTPA website for details and sign up. An Emerald Ash Borer trip to infected sites in New York state is scheduled for September 23rd. Contact the CTPA offices for sign up. <http://www.ctpa.org/index.html>

Stay thirsty (for knowledge) my Friends..... ☺



**MAINE:** *Billy Guess* [eaglearb@roadrunner.com](mailto:eaglearb@roadrunner.com)

All the rain in the spring was great for fungal diseases this year. Tar spot in Norway maple is the most noticeable in eastern Maine. Storm damage was light here but heavier in other parts of the

state. Up here we are still waiting for Browntail Moth - maybe next spring. Well this is the last you will hear from me in this capacity as my term as Maine State Rep has ended. Thank you.



**MASSACHUSETTS:** *Bear Scovil* [bear@newenglandisa.org](mailto:bear@newenglandisa.org)

---

In the summer newsletter I reported about the tornados that ravaged Massachusetts. This quarter I bring you Hurricane Irene, who was downgraded to a Tropical Storm, but by the time she hit New England she wreaked some serious havoc. In Vermont she still had enough power to render most of the state officially crippled. Here is an excerpt from an email I got from a dear friend who lives in Hancock, VT:

*Good morning:*

*So as all of you know, either because you experienced it first hand or heard on the news, Hurricane Irene blew through Vermont leaving in her wake a path of destruction reminiscent of what I saw in Mississippi after Katrina. Many people lost everything as it floated down a river or crumbled beneath them.*

*We were among the lucky though. Although our small town was devastated by Irene's force, we came out unscathed. Yes, power was out for six days along with the phones. Yes, we had to "come out" in a four wheel drive pickup truck last Tuesday (because there was no way we were missing the first day of school). Yes, we can't get back to our house because of "hole-y" roads, but we were/are among the very lucky ones in terms of loss. We didn't really lose anything - we're just inconvenienced for an indefinite period of time.*

*So for now we are living, with considerably shorter commutes, not in Hancock but in Cornwall and Barre. Judy is at her mother's and I spent this past week at my administrative assistant's house, and Monday will move into a little in-law apartment that one of our school's families has offered to me for an indefinite period of time. Optimistically, I am hoping we're back in our house by Halloween but there's probably a good chance that we will have to close it up for the winter. The very limited/restricted access that got us out on Tuesday has now been shut down completely because of bridge collapse.*

*It will take a long time for people in the tri-town area, Rochester, Hancock, and Granville to recover from this and I can imagine many never will completely recover. Efforts to try to temporarily fix some access roads in/out began immediately after Irene passed through and townspeople with heavy equipment have begun the process on their own not waiting for FEMA or the state DOT - an example of the resilience of Vermonters.*

*So that's the latest from the Green Mountain state. We're fine, lucky, and committed to helping our neighbors and friends recover/rebuild. We spent the day yesterday in Royalton helping to demo the first floor of a friend's of ours 2 year old house - headed back today. Keep those Vermonters who suffered losses in your thoughts and prayers.*

*Take care,  
Denise*

✉ : [heather@newenglandisa.org](mailto:heather@newenglandisa.org)

☎ : 978-844-0441



I know that this report relates more to the VT state report, but I submit it with the realization that New England is smaller than we think. As an ex-Vermont, I often wonder what the state boundaries are that separate us. Is it the taxes? Is it the forest? Is it the river drainage basin, or is it the license plate on our cars? I recognize that natural disasters and storms keep our borders blind and keep us all connected. People bond in the time of need. Whether you live in VT, CT, RI, NH, ME, or MA; state borders always evaporate when people need help. In the past few months I smile with pride when I hear co-workers going out of their way to help others in need. Trees live with or without us. Let us reconnect with our roots and realize that we all need each other.



**NEW HAMPSHIRE:** *Scott Knapp* [Scott.a.knapp@gmail.com](mailto:Scott.a.knapp@gmail.com)

---

No Report Submitted



**RHODE ISLAND:** NEC-ISAVP – *Tom Morra* [tomthetreeman@gmail.com](mailto:tomthetreeman@gmail.com) for *Ted Robinson* [t.robinsontree@gmail.com](mailto:t.robinsontree@gmail.com)

---

While we were not quite finished cleaning up for June's microburst storm in Providence, RI, Tropical Storm Irene caused significant tree damage across the state. With said that, it could have been worse if she came as a Category 1 hurricane! And although I was without power for 6 days, I am happy to say that most of my favorite trees (some patients, some not) weathered the storm quite well. RI was declared a federal disaster site, and hopefully FEMA financial aid will be coming in to offset costs. Luckily, the weather has been quite nice since the storm, allowing cleanup to continue without much interruption. Big thanks to National Grid, other utilities and all of the tree companies that helped out throughout the state to restore power and clear roadways.

I hope everyone had a safe and prosperous summer and that the fall brings you more of the same (safety & prosperity that is!)

I hope to see you at this year's annual conference in Bath, ME, until then – stay green!




**VERMONT:** *Brian Sullivan* [sul@burlingtontelecom.net](mailto:sul@burlingtontelecom.net)

---

Hello from Vermont. It has been an eventful summer for all of us. In August, Donald Lake Jr. P.E. presented ideas of site design using green practices and low impact design techniques in Montpelier. Most recently the Vermont Planners association hosted the Northern New England Chapter of American Planners fall conference in Burlington. The Vermont Urban and Community Forestry Program <http://www.vtfpr.org/index.cfm> is planning an interesting workshop this fall. On September 21st in Thetford VT, and the 27th, in Putney VT, the Nature Conservancy is sponsoring an Invasive Workshop for Forestry Professionals. I hope everyone is well and looking forward to fall.

Beyond ordinary  
**EXTRAORDINARY**  
 Exceed your expectations...

Buy 4 get 1 FREE, Trade Show or Gold Card Passes  
 visit [expo.teia.org](http://expo.teia.org) for details!



- Business
- Safety
- Arboriculture


2011 **TCI EXPO** 2011  
 Hartford, CT

World's Largest Tree Care Industry Trade Show and Conference

**November 3-5, 2011**  
 Pre-conference workshops Nov. 1 & 2

This year go **beyond ordinary**, with **exceptional** education sessions, **unique** networking opportunities and **impressive** products designed for your tree care business, TCI EXPO will **exceed your expectations**. From the trade show floor to the evening events, the **distinct** atmosphere of TCI EXPO is felt throughout the conference. Experience the **extraordinary**.

Call: 1-800-733-2622 Web: [expo.teia.org](http://expo.teia.org)





**Tour des Trees**  
 To Benefit the TREE Fund



**TREE FUND**  
 TREE Research & Education  
 Endowment Fund

## Team New England Donation!

The New England Chapter is happy to announce their support of the New England Riders participating in the 2011 STIHL Tour des Trees. The Chapter generously voted to sponsor Team New England in the amount of \$2,000.00 (\$500.00 per rider)! For more info on the event and the riders visit: [http://www.newenglandisa.org/tourdestrees\\_virginia.html](http://www.newenglandisa.org/tourdestrees_virginia.html)

## Good Luck Riders!



Consulting • Education • Management • Tree Care

**Dave Hawkins, Consulting Arborist**  
*Over 33 years Experience in Arboriculture*

- Mass. Certified Arborist MCA #1425
- ISA Board Certified Master Arborist NE-0541-B
- RI Licensed Arborist #696
- American Society of Consulting Arborists, *Member*
- Mass. Tree Warden's and Foresters Assn.  
*Executive Board Member; Western Mass. Representative.*
- Tree Care Industry Association, *Member*

154 Buffam Road, Pelham, Massachusetts  
 (413) 253-4266 office/fax (413) 237-5106 mobile  
 Email: [dhawkufs@comcast.net](mailto:dhawkufs@comcast.net) [www.ufstrees.com](http://www.ufstrees.com)

### Oversized Tree Butt Processing



Processing available on an hourly rate basis.  
 For information about this service call  
 207-748-3075



<http://www.lucastree.com>  
 (800) 339-8873  
 (207) 797-7294  
[info@lucastree.com](mailto:info@lucastree.com)

Growing naturally  
 ...since 1926

## LUCAS

TREE EXPERTS



## NEC-ISA 45<sup>TH</sup> ANNUAL CONFERENCE & TRADESHOW

**Where: Main Maritime Museum, Bath, ME**

**When: October 22-25, 2011**

**Registration:** For a detailed program and to register online visit:

[http://www.newenglandisa.org/annual\\_conference.html](http://www.newenglandisa.org/annual_conference.html) or print and mail the attached registration form (pp 14-15). Sponsorship and exhibitor opportunities are available – visit this link a sponsorship and exhibitor form:

<http://www.newenglandisa.org/files/2011/2011SponsorsExhibitorsFINAL.pdf>



✉: [heather@newenglandisa.org](mailto:heather@newenglandisa.org)  
 ☎: 978-844-0441



## The 2nd Women's Tree Climbing Workshop (WTCW2)

By Kelly Allen

Last year I was fortunate enough to receive the Scholarship to attend the Second Annual ISA Women's Tree Climbing Workshop. Having attended the first workshop, the tree climbing bug had already bitten me and I was desperate to get back in the saddle.

I began working in the horticulture and arboriculture industries when I was sixteen, but did not begin to truly pursue a career until 2009, which happened to be when I climbed my first tree during the First Annual Women's Tree Climbing Workshop. I will never forget the rush of adrenaline that I felt when I made it to the top of an 80 foot Eastern hemlock. My doubts in my own abilities began to dissolve with this new achievement. Never having been much of an athlete, I must admit that I did not believe I would be able to climb more than a few feet, but with the expertise and direction of the workshop instructors I was able to exceed my own expectations. That was one of the defining moments of my life, and for that I will be forever grateful to the women who helped me, and continue to inspire me.



The Second Annual WTCW was an experience unlike any other. The serene and picturesque grounds of the Mary Wakefield Estate was the perfect setting to gather together to continue our tree climbing education with our illustrious instructors. Our group was smaller than the previous year's, with a wide range of personalities, talents, and interests. We were able to have more personal attention from the instructors and from each other. During my climbing time I ran into a bit of a snag, and I remember being particularly frustrated with myself not only for having a difficult time but also for being too distracted to calmly listen to the advice I was being given. I eventually regained my bearings, but I still to this day think of those moments and how I wish I had reacted, and I take pride in knowing that I have indeed learned from my mistakes. One of my fondest memories from last year's workshop was getting the opportunity to help another woman get up into a tree. I was able to give her the support and encouragement that she needed, and that I had needed on my first climb. It made me feel empowered for us both in a new way. I left the first workshop feeling that I was strong, and I left the second workshop feeling that we all were strong, and drawing so much pride from all of our achievements that weekend.

As a woman in horticulture, these experiences have been an invaluable source of inspiration. I have left these workshops each year feeling renewed, focused, and strong in ways that I may have not been aware. The women who plan and run these events should feel proud that we leave with much more than climbing skills. For now I am only able to pursue climbing recreationally, but I hope that one day I will be able to incorporate this skill into my professional life. The Women's Tree Climbing Workshops continue to be a source of excitement and inspiration for me, and I cannot wait to get back in a tree!

**NEC-ISA Annual Conference & Tradeshow - Business****CAST YOUR  
VOTE!****Proposed 2011 By-Law Changes**

These two proposed by-law changes require a two-thirds affirmative vote by NEC-ISA membership to be changed in the New England Chapter Constitution and Policies and Procedures Manual. Cast your vote at the Annual Conference in Bath, ME October 22-25, 2011:

1. **NAME CHANGE:** Insert 'Chapter Representative to the Council of Representatives' where 'Chapter Representative' appears in the NEC-ISA Constitution and Policies and Procedures.
2. **NEW VOTING BOARD MEMBER:** Under Article V.C. The Tree Climbing Chair will be added to the list of Board Members. Under Article VI.A. bullet point 2 the Tree Climbing Chair will be added to the list of board members.

**Strategic Plan**

The New England Chapter is proud to announce the NEC-ISA Strategic Plan is complete! Thank you to everyone who provided valuable feedback and special thanks to Presidential Appointee, Danielle Fitzko, for spearheading the effort to update the plan to reflect the needs of our current membership. To view the plan, please visit our website: [http://www.newenglandisa.org/files/2011\\_NECISA5YearStrategicPlan.pdf](http://www.newenglandisa.org/files/2011_NECISA5YearStrategicPlan.pdf) or for a hard copy you can contact Heather Leff at [heather@newenglandisa.org](mailto:heather@newenglandisa.org) or 978-844-0441.

## **The Bath Community Forestry Committee's Fourteenth Annual Community Forest Photography Contest**

The City of Ships is also the City of Trees. During the months of September and October, look within the city limits of Bath for the most striking trees in full fall color and photograph them, or images of trees taken at any time of the year! Spring, Summer, Fall, Winter! The contest is open to anyone. Note the tree's location (address/cross-streets), camera type used, film used (if any), date photo was taken, time of day, camera settings (if any), and give the image a title. Please, limit the number of entries per person to three (3), and remember to include all information with each entry. Please look for extra copies of the application forms in Bath City Hall, the Bath Cemeteries & Parks Department Office, the Patten Free Library and at all the sponsoring businesses. Entries can be mailed in at any time during the contest. All photographs become the property of the Bath Community Forestry Committee. For more information, or if you have any questions, please call 443-8345.

All entries will be judged on composition and presentation. This year's judges will be: Ms. Pam Allen, from the Bath Printing Company; Mr. Mike Mahan, of Mahan Graphics; Mr. Andreas von Huene, a local artist; and Mr. Roger Duncan, professional photographer and educator. Four (4) awards will be given to adult entrants; four (4) awards will be given to student entrants; and one (1) Judge's Choice award will be awarded. Prizes are being generously donated by Big Top Deli, Byrnes Irish Pub & Restaurant, Just Framing, Now You're Cooking, Skillin's Greenhouse, York's Hardy Rhododendrons, Bart & Greg's DVD Explosion, The Maine Arborists Association, Henry & Marty's Restaurant, Beale Street Barbeque and Bull Moose Music. The two First Prizes are: Adult Category, a 2-inch caliper tree from Skillin's Greenhouse and a \$50.00 gift certificate from Henry & Marty's Restaurant and, Student Category, a \$75.00 gift certificate from York's Rhododendron's, and a \$20.00 gift certificate from Bull Moose Music. The Second Prize for the adult entrant is a \$50.00 gift certificate from Byrnes Irish Pub & Restaurant and a \$50.00 gift certificate from Just Framing. The Second Prize for the student entrant is a \$50.00 gift certificate from Just Framing and a \$25.00 gift certificate from the Big Top Deli. The Third Prize for the adult entrant is a \$50.00 gift certificate from Byrnes Irish Pub & Restaurant and a \$25.00 gift certificate from Beale Street Barbeque, and for the student entrant a \$25.00 gift certificate from the Big Top Deli and a \$25.00 gift certificate from Beale Street Barbeque. The Fourth prize for both categories is a Maine Arborists Association t-shirt. The Judge's Choice winner will be awarded a special gift from Now You're Cooking! Where possible, save one copy of your image on a PC disk. Images can be developed on PC disk at CVS and Shaw's Supermarket, locally or emailed to [thoerth@cityofbath.com](mailto:thoerth@cityofbath.com).

All entries received by Friday, November 4th, will be displayed in the Patten Free Library Children's Room starting Friday, November 11th. An awards ceremony will be held at the Patten Free Library on Friday, Nov. 11th, from 4:00-5:00 p.m. All entries will also be displayed on the Bath Community Forestry Committee's web-site found at [www.cityofbath.com](http://www.cityofbath.com). Members of the Forestry Committee and their families are prohibited from entering the contest.

All entrants will receive a copy of the updated postcard collection featuring selected images from past photo contests as well as being recognized in our Forestry Newsletter. Adults entrants will receive a \$10.00 discount coupon from Skillin's Greenhouse. Student entrants will receive a free DVD rental from Bart & Greg's DVD Explosion, which can be picked up during the afternoon awards ceremony at the Patten Free Library on Friday, Nov. 11th. Images and Application Forms can be sent to: 14th Annual Community Forest Photo Contest, C/O Bath Dept. of Cemeteries & Parks, 1 Oak Grove Ave., Bath, Maine 04530-2236.

# CLEAVES CO, INC.

*Specializing in Your  
Landscape & Arborist Needs*

[www.cleavesco.com](http://www.cleavesco.com)

Lenny Cleaves  
300 Reservoir Street  
Needham, MA 02494

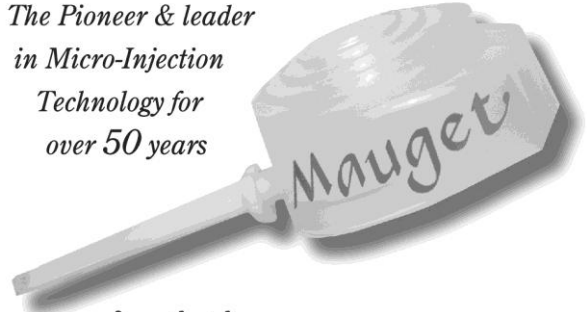
**877-449-0833**

*Proud Sponsor of the NEC-ISA*

## Mauget Micro-Injections

Deliver Materials Using the Tree's  
Natural Transport System

*The Pioneer & leader  
in Micro-Injection  
Technology for  
over 50 years*



**Available as:**

- Fertilizers
- Insecticides
- Fungicides
- Antibiotics



**Arbor Care** INC.

800-146-0776

[www.maugetproducts.com](http://www.maugetproducts.com)

Also a distributor for [treecaresupplies.com](http://treecaresupplies.com)

**For Sale:** ArborWear West Woods Tech Shirts embroidered with the New England Chapter ISA logo on the front and the Chapter website on the back.

Features front zip mesh pocket, breathable underarm and side panel fabric and buttons to secure rolled up sleeves.

Available in Slate Blue or Khaki and sizes small to xxlarge.

\$47.50 each and it includes shipping and handling.

Mail check and/or credit card information to NEC-ISA P.O. Box 435, Norwell MA 02061 or call 978-844-0441.



✉ : [heather@newenglandisa.org](mailto:heather@newenglandisa.org)

☎ : 978-844-0441



**Expand your network.  
Enrich your experience.**



**When you renew your ISA and chapter membership for 2012, tell a friend and earn rewards.**

As a New England Chapter ISA Member, you connect to skill-building educational materials, emerging industry innovations, and an expanding network of both local and international urban tree care professionals.

From now until March 2012, ISA and the New England Chapter will reward you for spreading the word about ISA, the New England Chapter of ISA, and our professional affiliates. In exchange for the recommendation, you will be eligible for rewards through the 2012 ISA Professional Connections program.

For details about this program, visit [www.isa-arbor.com/connect](http://www.isa-arbor.com/connect).

**2012 Professional Connections Program Rewards**

Refer your colleagues and let us reward your efforts.

2 Points	ISA Sports Bottle
3 Points	Trees Are Good T-shirt
5 Points	One course of your choice in the new ISA Online Learning Center
10 Points	ISA logo jacket
15 Points	2013 ISA Professional Membership
20 Points	Registration for the 2012 ISA Annual Conference in Portland, Oregon U.S.A.
25 or More Points	Eligibility for grand prize of Apple iPad 2



**International Society of Arboriculture**  
[www.isa-arbor.com](http://www.isa-arbor.com) • p. 217.355.9411 • [isa@isa-arbor.com](mailto:isa@isa-arbor.com)



**2011 OFFICERS**

PRESIDENT – Thomas Hoerth  
[thoerth@gmail.com](mailto:thoerth@gmail.com)

PRESIDENT-ELECT – Chris Rooney  
[Christopher.rooney@us.ngrid.com](mailto:Christopher.rooney@us.ngrid.com)

VICE-PRESIDENT – Tom Morra  
[tmorra@newenglandisa.org](mailto:tmorra@newenglandisa.org)

PAST PRESIDENT – Julie Coop  
[juliemcoop@gmail.com](mailto:juliemcoop@gmail.com)

TREASURER - Richard Herfurth  
[rherfurth@bartlett.com](mailto:rherfurth@bartlett.com)

SECRETARY – Jen Kettell  
[jkettell@newenglandisa.org](mailto:jkettell@newenglandisa.org)

ISA CHAPTER REP – Karen Doherty  
[Karendoherty2@comcast.net](mailto:Karendoherty2@comcast.net)

CERTIFICATION LIAISON - Warren Spinner  
[wspinner@ci.burlington.vt.us](mailto:wspinner@ci.burlington.vt.us)

CONNECTICUT REP – Greg Lukos  
[glukos@hvmaster.com](mailto:glukos@hvmaster.com)

MAINE REP – Didier Bonner-Ganter  
[fortree@sbcglobal.net](mailto:fortree@sbcglobal.net)

MASSACHUSETTS REP – Bear LeVangie  
[Bear@newenglandisa.org](mailto: Bear@newenglandisa.org)

NEW HAMPSHIRE REP – Scott Knapp  
[Scott.a.knapp@gmail.com](mailto:Scott.a.knapp@gmail.com)

RHODE ISLAND REP – Ted Robinson  
[t.robinsontree@gmail.com](mailto:t.robinsontree@gmail.com)

VERMONT REP – Brian Sullivan  
[sul@burlingtontelecom.net](mailto:sul@burlingtontelecom.net)

TCC CHAIRMAN - William Conn  
[lorax93@yahoo.com](mailto:lorax93@yahoo.com)

TREE FUND LIAISON - Jeff Carney  
[Jeffrey.carney@us.ngrid.com](mailto:Jeffrey.carney@us.ngrid.com)

PRESIDENTIAL APPOINTEES:

Danielle Fitzko  
[danny@pshift.com](mailto:danny@pshift.com)

Marcy Gladdys  
[marcygladdys@hotmail.com](mailto:marcygladdys@hotmail.com)

Melissa LeVangie  
[mlevangie@newenglandisa.org](mailto:mlevangie@newenglandisa.org)

EXECUTIVE ASSISTANT:

Heather Leff  
[heather@newenglandisa.org](mailto:heather@newenglandisa.org)

WEBSITE MANAGER – MELISSA LEVANGIE  
NEWSLETTER EDITORS – JEN KETTELL &  
HEATHER LEFF

✉ : [heather@newenglandisa.org](mailto:heather@newenglandisa.org)  
☎ : 978-844-0441



The advertisement for Shelter Tree Tree Care Products features a large tree logo at the top. Below the logo, the text reads "SHELTER TREE" in large, bold letters, followed by "Tree Care Products" in a smaller font. The ad lists authorized servicing dealers for various equipment: BUILT-RITE Splitters & Conveyers, CARLTON Disc Chippers & Stump Grinders, and WOODSMAN Drum Chippers. The phone number 800.720.TREE (800.720.8733) is prominently displayed. The website www.shelvertree.com is provided, along with the address 195 John Dietsch Square, North Attleboro, MA 02763. A list of manufacturers whose products are carried is provided: ARS, Buckingham, Corona, CMI, Doggett, Fanno, Felco, Husqvarna, ISC, Jameson, New England Ropes, Petzl, PHC, Samson Ropes, Stihl, Tallman Ladders, Weaver, and Yale Cordage. Other services include knife grinding, chipper & stump grinder repair, and more. Logos for ISA, TCIA, and other organizations are shown at the bottom, along with a note that major credit cards are accepted.

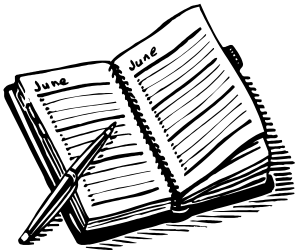




NEC-ISA  
 P.O. Box 435  
 Norwell, MA 02061

**Share your experiences...**

The NEC-ISA is offering \$100 to the ambitious person who would like to undertake writing an article (500 words) for our newsletter. It can be anything related to arboriculture, a story you would like to share. Guaranteed publication; perfect writing skills not required. Call now or email to discuss - All participation encouraged. *CALL THE OFFICE TODAY - WE WANT TO HEAR FROM YOU!*



**WHEN & WHERE  
 Upcoming Calendar Fall/Winter Events 2011**

**2011 HAPPENINGS** – for complete listing & for more detailed information, visit our CALENDAR at [www.newenglandisa.org](http://www.newenglandisa.org)

- Oct 2-3 STIHL Tour des Trees Virginia-DC
- Oct 4 CTPA Trees & the Law Workshop, Aqua Turf, Plantsville
- Oct 6 Chainsaw Safety w/Dan Tilton, North Andover, MA
- Oct 22-25 NEC-ISA Annual Conference & Tradeshow
- Oct 25 [Mass Arborists Assn.](#) Safety Saves & Dinner Meeting Location: MHS Elm Bank, Wellesley & Ken's Steak House, Framingham
- Oct 27 Tree Steward Training One Day Soils Class Time: 9-4 pm
- Oct 28-29 Tree Steward Training, Petersham, MA Time: 9-4:30 pm

✉: [heather@newenglandisa.org](mailto:heather@newenglandisa.org)  
 ☎: 978-844-0441

**ISA CERTIFICATION EXAMS**

For information on ISA exams in New England Contact: Warren Spinner at (802) 862-8245

Exams are tentatively scheduled for August 2011

**NEW ENGLAND STATES CERTIFICATION OR LICENSE EXAM DATES/LINKS**

- CT: [HTTP://WWW.CTPA.ORG/INDEX.HTML](http://www.ctpa.org/index.html)
- MA: [HTTP://WWW.MASSARBOR.ORG/](http://www.massarbor.org/)
- ME: [HTTP://WWW.MAINEARBORIST.ORG](http://www.maine-arborist.org)
- NH: [HTTP://WWW.NHARBORISTS.ORG/](http://www.nh-arborists.org/)

**Upcoming Exams: Certified Arborist, Utility & Municipal Specialty**

- Oct 8: Worcester, MA
- Oct 25: Bath, ME (at New England's Annual Conference)
- Nov 4: Hartford, CT (at TCIA Expo)



## Directions to Maine Maritime Museum

From Points South (exit 52 off I-95, Maine Turnpike)

- Take I-295 to exit 28. Follow Route 1 North through Brunswick to Bath.
- Take the Historic Bath exit downhill to traffic light.
- Turn right onto Washington Street.
- Go south for 1.2 miles past the Bath Iron Works complex.
- The Museum will be on your left.

From Points North

- Take Maine Turnpike to Exit 103, West Gardiner (formerly exit 14b) onto I-295.
- Take the Topsham exit 31A (formerly exit 24A), and turn right onto Route 196 East.
- Continue straight through all lights and proceed north on Route 1 to Bath.
- In Bath, take the Historic Bath Exit to traffic light.
- Turn right onto Washington Street.
- The Museum will be 1.2 miles on the left.

From North - Coastal Route 1

- Take Route 1 south to Bath.
- Take the 209 Bath/Phippsburg exit just over the Sagadahoc Bridge.
- Turn left at traffic light to pass under Route 1 and travel along Washington Street for 1.2 miles.
- The Museum will be on your left.

## Directions to Library Park (Pre-Conference Events)

Location of Weekend Workshops

The Library Park is located on the corner of Washington and Summer Street and is the home of the Patten Free Library. Park benches and an abundance of grassy slopes provide an inviting spot for visitors to sit and enjoy the peaceful atmosphere as they while away the afternoon with a good book from the library or simply to view the sites of the Kennebec River and the city below.

A replica of the original gazebo that was in the park many years ago is centered in the middle of the Park and houses many cultural events throughout the year.

## CONFERENCE HOTELS

Hampton Inn, 140 Commercial Street, Bath, ME 04530  
207-386-1310 or hamptoninnbath@gmail.com  
Group Code: ARB, Group Rate: \$139 or \$149/night

Holiday Inn, 139 Richardson Street, Bath ME 04530  
207-443-9741  
Group Rate booked by 9/23/2011: \$80/night

For local B&Bs, refer to insert or visit [http://visitbath.com/?page\\_id=1261](http://visitbath.com/?page_id=1261)

Shuttle service to and from the museum & the Hampton Inn and Holiday Inn will be provided by the Bath Trolley Bus. Runs from each Inn will be Monday 7-8 am, 5-6 pm and Tuesday 7-8 am and 1pm.

## Continuing Education Units

ISA and Other Professional Continuing Education Credits will be available.

NEW ENGLAND  
PO BOX 435  
NORWELL, MA 02061



Printed from: [www.newenglandisa.org](http://www.newenglandisa.org)



**OCTOBER 22-25, 2011**

*MAINE MARITIME MUSEUM*

**REGISTRATION FORM**

### Pre-Conference Events (A-La-Carte)

Note: 30 Person Limit Per Workshop  
Class Fee Includes Lunch and Dinner  
(Sat 4-6pm)

#### Saturday, October 22, 2011 (9am-12pm)

- Chainsaw Op & Maint Workshop.....\$35.00
- Tree Climbing Demo.....\$35.00

#### Saturday, October 22, 2011 (1-4pm)

- Simple Tenex Splicing.....\$35.00
- Tree Climbing Demo.....\$35.00

#### Sunday, October 23, 2011 (9am-12pm)

- Tree Pruning Workshop.....\$35.00

- 2nd & 3rd Workshop \$25 each (please indicate)

#### Saturday—Tuesday

NEC-ISA Trek de Trees.....FREE  
CEUs are available for this scavenger hunt style walking tour visiting historical and scenic landmarks and trees for points and prizes.

**Tuesday, October 25, 2011 1-5pm—Maine Maritime Museum**—The Certified Arborists Exam will be offered in the North Room.

### Conference Overview

#### Sunday, October 23, 2011

6:00-9:00pm—Opening Reception—Maine Maritime Museum

#### Monday, October 24, 2011

General Sessions (8:00am-Noon)

8:00-8:30—NEC-ISA Business Meeting

8:30-8:45—Greeting—The Honorable Bernard Wyman, Bath City Council Chairman & Tom Hoerth, Bath City Arborist & Tree Warden

8:45-10:15—TRACE Overview—Jim Flott

10:15-10:45—Break, Exhibitors

10:45-12:00—OSHA/ANSI Standards Update—Dr. Dennis Ryan

Noon—1:30pm—Award Ceremony & Luncheon

1:30—5:00pm Break Out Sessions

Session A 1:30-2:30, Session B 2:30-3:30, Break, Session C 4:00-5:00

*Municipal Strand*—From Seeds 2 Street Trees; iTree; and Grants & Alternative Funding Sources.

*Utility Strand*—Tree Growth Regulators; ROW Vegetation Management; HydroQuebec Benchmark Study

*Commercial Strand*—New Crane Guidelines; Insurance; and Fruit Tree Pruning.

#### Tuesday, October 25th, 2011

General Sessions 8:00-Noon

8:00-9:15—EHAP Presenter—Dave Hawkins

9:15-10:30—Fungi—Kevin Smith

10:30-11:00—Break, Exhibitors

11:00-12:30—Key Note Speaker, Doug Tallamy, "Bringing Nature Home"

### Key-Note Speaker

NEC-ISA 45th Annual Conference &

Tradeshow

Key Note Speaker

Doug Tallamy

"Bringing Nature Home"



### Conference/Luncheon Pricing

	# of People		Subtotal
<b>Early-Bird Price - Before October 10, 2011</b>			
<input type="checkbox"/> Member (1-2)	\$200 x _____	=	_____
<input type="checkbox"/> Member (3+)	\$175 x _____	=	_____
<input type="checkbox"/> Non-Member (1-2)	\$235 x _____	=	_____
<input type="checkbox"/> Non-Member (3+)	\$210 x _____	=	_____
<b>AFTER October 10, 2011</b>			
<input type="checkbox"/> ALL	\$230 x _____	=	_____
<b>One Day Only</b>			
<input type="checkbox"/> ALL	\$125 x _____	=	_____
<input type="checkbox"/> Students—Free	x _____	=	_____
Name (For More Print Add'l Form)	Menu Choice		
_____	<input type="checkbox"/> Meat <input type="checkbox"/> Fish <input type="checkbox"/> Veg		
_____	<input type="checkbox"/> Meat <input type="checkbox"/> Fish <input type="checkbox"/> Veg		
_____	<input type="checkbox"/> Meat <input type="checkbox"/> Fish <input type="checkbox"/> Veg		
_____	<input type="checkbox"/> Meat <input type="checkbox"/> Fish <input type="checkbox"/> Veg		
<input type="checkbox"/> Add'l Luncheon Tax (\$25.00)			
Name (For More Print Add'l Form)	Menu Choice		
_____	<input type="checkbox"/> Meat <input type="checkbox"/> Fish <input type="checkbox"/> Veg		

**Mail Payment to: Heather Leff, NEC-ISA, P.O. Box 435, Norwell, MA 02061 ?s: Heather 978-844-0441 or heather@newenglandisa.org**

NEC-ISA 45th Annual Conference Registration Form - Please return this entire page along with your form of payment and information.

Name: \_\_\_\_\_ Company Name: \_\_\_\_\_

Address: \_\_\_\_\_ City: \_\_\_\_\_ State: \_\_\_\_\_ Zip: \_\_\_\_\_

Email: \_\_\_\_\_ Telephone: \_\_\_\_\_ (Circle: Cell or Landline)

#### FORM OF PAYMENT

Total Amount Enclosed: \_\_\_\_\_  Check # \_\_\_\_\_ OR  Visa  MasterCard

Card #: \_\_\_\_\_ Exp. Date: \_\_\_\_\_ SIC Code: \_\_\_\_\_

Or for Online Registration visit the Chapter's website at: [www.newenglandisa.org/annual\\_conference.html](http://www.newenglandisa.org/annual_conference.html).

