



**NEW ENGLAND CHAPTER
QUARTERLY NEWSLETTER
SPRING 2019**

IN THE NEWS	
WORKSHOPS UPDATE	1
PRESIDENT'S MESSAGE	2
2019 NEW ENGLAND ISA TREE CLIMBING CHAMPIONSHIP	4
STATE REPORTS	8-13
TREE FUND UPDATE	14
BRISTOL AGGIE UPDATE	15
2016 NEC OFFICERS	16
PLEASE TAKE OUR SURVERY	17-18
JOB OPPORTUNITIES IN NEW ENGLAND	19
UPCOMING EVENTS & ISA EXAMS	20

SPRING WORKSHOPS



Spring has been very busy here at the New England Chapter! On February 25-27, we hosted the ISA Tree Risk Assessment qualification at Blithewold Arboretum in Bristol, RI. This class sold out, with 20 arborists looking to get this valuable qualification! Immediately following the TRAQ course we held a one-day renewal for those currently qualified in TRAQ. This course marked five years since New England ISA's first ISA Qualification course! Today there are nearly 300 TRAQ Qualified New England Arborists.



On March 22, a rainy Friday, we were able to host over 50 participants INDOORS at Vermeer Northeast in Hopkinton, MA, for Tree and Shrub Pruning (pictured right). Everyone stayed dry and earned 6.5 ISA CEUs!

On April 1, you can find [Mauget Certified Applicator Training](#) - Earn up to 8 CEUs. Two CEUs will be offered for the condensed training and six additional CEUs are offered through the FREE interactive safety CD you will receive at the course!

On April 19, we are offering an [Ascent Workshop](#) – Earn 7 CEUS – hands-on or observing!

On April 24-26, we are offering the ISA Tree Risk Assessment Qualification course (registration closed March 25).

On April 29, we are offering an Aerial Rescue Certificate Course at Smith College in Northampton. This class is sold out.

June 1 is the [New England ISA Tree Climbing Championship](#).

October 6-8 is our [Annual Conference](#).

There are lots of CEU and networking opportunities plus you can take advantage of our [industry calendar](#) for other great education here in New England and beyond!

PRESIDENT'S LETTER

By Rick Harper



We've turned the corner and the long cold nights have made way for the longer, warmer days. Springtime for many is a time of change – an awakening from winter's slumber. Here at UMass, students see the light at the end of the tunnel as they approach the final chapter of a busy semester. Our student populations represent the next chapter in the arboriculture/urban forestry sector, and many of them will be meeting many of you as new full-time employees, or as summer interns. We all hear about how important it is to train and equip new employees, but I believe it is of equal value to take the time to make them feel like a

welcomed, contributing member of the organization. Having high performance standards as an employer and leader in our sector is critical to staying competitive, productive, and relevant. A mindset and awareness that is cognizant of the fact that new environments and challenges can require patience and mentoring, is also equally important – especially when it comes to retaining the new employees that you're investing in.

I believe that our chapter plays a critical role in furthering the tree care profession for the next generation – and we are continuing to build on that. This year the NEC ISA Board of Directors has already voted to increase each of our three scholarships by \$500 to \$2,500 each. These are among the most generous student scholarships available and we hope other associations follow-suit. The Board of Directors also voted to increase the ceiling from \$250 to \$400 on the Shigo Student Support fund. For those who may not know, the purpose of the Shigo fund is to provide grants to students endeavoring to expand their knowledge of arboriculture through participation in conferences, workshops, trainings, and other events.

Speaking of events, Arbor Day will soon be here and NEC-ISA supports a competitive grants program designed to assist communities with their own Arbor Day celebration. These local programs are a great way to spread the word about the importance of trees, interact with the public, and provide an excellent platform to promote arboriculture and urban forestry. If you are involved in such an event, check out our website for more information.

With spring in full swing, we also look forward to a plethora of NEC-ISA programs and workshops. These include numerous credentialing exams like TRAQ and the ISA Arborist Certification. We will see the return of many of our favorites including the New England Tree Climbing Championship (NE TCC), scheduled for June 1 at the Masonic Youth Center, Warwick, RI. It is from here that New England's best climbers will go on to represent our chapter at the ITCC and North American TCC later this year. As always, remember to stay in touch by consulting the NEC-ISA website for further details: <https://www.newenglandisa.org>.

A former mentor of mine once said that "everyone who has ascended to a position of influence has ultimately been the recipient of help from others along the way." Use your position and influence as a leader in our sector to mentor and grow the next generation of arborists and urban foresters. Happy Spring!



SHELTER
TREE CARE PRODUCTS

**Trusted
Arborist
Products**
Since 1994

800-720-8733
(TREE)

SHELTERTree.com



(434) 525-2929
 www.forestry.customtruck.com
 forestrysales@customtruck.com
 12660 E. Lynchburg Salem Tpke, Forest, VA 24551



Bandit & Cleaves Co.
 INDUSTRIES, INC.

When you're looking for Bandit Equipment, Cleaves Co. offers the

BEST - CHIPPERS & STUMP GRINDERS.
 - DEALER SERVICE & SUPPORT.
 - PRICES OF THE YEAR.

Cleaves Co. has been providing sales and service support to the New England area for over 30 years! Let them show you what a Bandit Chipper or Stump Grinder can do for your operation!

www.cleavesco.com

300 RESERVOIR STREET • NEEDHAM, MA 02494 • 877-449-0833

ARBORICULTURE SERVICES
URBAN FORESTRY SOLUTIONS
 PELHAM, MA

Consulting • Education • Management • Tree Care

Dave Hawkins, Consulting Arborist
Over 40 Years Experience in Arboriculture

- Mass. Certified Arborist MCA #1425
- ISA Board Certified Master Arborist NE-0541-B
- RI Licensed Arborist #696
- American Society of Consulting Arborists, *Member*
- Mass. Tree Wardens and Foresters Assn. *Executive Board Member; Secretary*
- Tree Care Industry Association, *Member*

154 Buffam Road, Pelham, Massachusetts
 (413) 253-4266 office (413) 237-5106 mobile
 Email: dhawkufs@comcast.net www.ufstrees.com

✉: heather@newenglandisa.org
 ☎: 978-844-0441

NEC-ISA's 30th Annual Tree Climbing Championship

Date: Saturday, June 1, 2019

Time: 6:45am - 6:00pm

Location: Masonic Youth Center, Warwick, RI

RAIN DATE: Sunday, June 2



The New England Chapter of ISA is pleased to announce that the 30th Annual New England Chapter of the International Society of Arboriculture Tree Climbing Championship will be held at the Masonic Youth Center in Warwick, RI. This unique and exciting event is open to the public. We hope you can attend.

Watch as the region's most skilled climbers compete for the coveted title of New England Champion and a chance to compete in the grand finale, known as the International Tree Climbing Championship, to be held this summer in Knoxville, TN! Climbing categories include: Aerial Rescue, Belayed Speed Climb, Work Climb, Ascent Event, Throwline, and Master's Challenge.

There will be a kid's climb, too, so bring the whole family! Event times may vary depending on weather:

- 6:45am –1:00pm Tree Climbing Championship Preliminary Events
- 10:00am -1:00pm Kids Tree Climb (Suggested donation \$10 per child)
- 2:00pm –5:00pm The Master's Challenge Event (the finals)
- 5:00pm - 6:00pm Results & Awards

Sponsorship Opportunities can be found at [here](#). Want to **Volunteer?** Click [here](#).

2019 ArborMaster Climbing Kit Prize Package

The New England Chapter ISA is pleased to announce the 2019 ArborMaster Climbing Kit Prize Package for the Tree Climbing Champion (TCC), held in conjunction with the chapter's 2019 Tree Climbing Championship event.

This climbing kit is being offered to each chapter champion (both man and woman, if applicable)! The package is intended to help equip the chapter representative(s) for the International Tree Climbing Championship (ITCC) Competition.

Each prize package includes:

- Buckingham Master 5.0 Arborist Tree Climbing Saddle
- Silky Zubat Arborist Professional Hand Saw with Leg Straps
- OREGON® Tool Bag
- Vermeer Logo'd 52 oz. Stainless Steel Oversized Mug
- 50% savings for an ArborMaster® 2-Day or 3-Day Hands-On Training Module
- Samson ArborMaster® 150' Hawkeye Climbing Line with eye splice

Sponsored by:



✉: heather@newenglandisa.org

☎: 978-844-0441

Wedgle® Direct-Inject™ TREE INJECTION SYSTEM

Our advanced technology for tree treatment allows you to

INCREASE THE NUMBER OF TREES YOU TREAT IN A DAY!

- ◆ No drilling damage
- ◆ No mixing at job sites
- ◆ No guarding or return trips
- ◆ No waiting for uptake
- ◆ Treats most trees in five minutes or less!
- ◆ Successful and most profitable add-on service

Now Available

Emamectin Benzoate

Boxer™

Insecticide-Miticide
for Two Year Control
of EAB & other
insects and
mite pests



Multiple injection tips designed for all types of trees, conifers and palms



Insecticides • Fungicides • PGRs • Antibiotics • MicroNutrients

Learn more! Call 800.698.4641 or visit
ArborSystems.com for information and videos



Be one step ahead, treat for gypsy moth.



TREEAZIN can be used to control gypsy moth populations in the spring and fall injections. This is an OMRI Listed product.

Contact BioForest today to learn more about treatments to control gypsy moth. For more information, please contact **1.888.236.7378** or visit **bioforest.ca**

REPORTS & NEWS



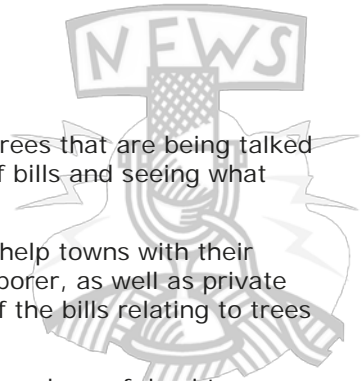
CONNECTICUT: *Ken Placko* kcplacko@hotmail.com

You know it is spring in Connecticut when you hear of new laws on trees that are being talked about at the capital. The State legislators are proposing a number of bills and seeing what sticks.

This year it seems that two new proposed laws that might be sticking would help towns with their abundance of dead and dying trees caused by gypsy moth and emerald ash borer, as well as private property owners' liability for fallen trees on their neighbors' property. Most of the bills relating to trees are placeholder bills and have already started to fade.

The issue that the Legislature is grappling with is assisting towns with large numbers of dead trees on public roads. The number of dead trees has spiked due to emerald ash borer, gypsy moth, drought, and other causes. Most towns simply do not have the resources to deal with the number of trees-in-need that they have. Among the bills that have been proposed to assist towns in dealing with this problem are those that have recommended the Department of Energy and Environmental Protection (DEEP) establish a grant program for tree removal, but offer no funding for this program, and another bill that would exempt tree removal activities from sales tax. One bill that is moving along is HB 5886, AN ACT CONCERNING THE USE OF LOCAL CAPITAL IMPROVEMENT FUND GRANTS FOR THE REMOVAL OF CERTAIN TREES. The purpose of the bill is to allow Local Capital Improvement Funding to be used by towns for tree removal. The same language as is contained in HB 5886 is also contained in the Governor's Budget Bill SB 876.

There are three other bills that are moving along that also might interest the arborist. HB7188 AN ACT CONCERNING A PROPERTY OWNERS LIABILITY FOR THE EXPENCES OF REMOVING A FALLEN TREE OR LIMB, revives a bill that has come before the legislature several times in recent years, including having been passed in 2014, only to be vetoed by the Governor.



A CUT ABOVE
Innovation and Expertise Since 1926



The purpose of this bill is to establish conditions under which a tree owner could be held responsible for the clean-up of a tree the falls upon a neighbor’s property. In this discussion, the role of Connecticut-licensed arborist is given importance both for the arborist’s ability to identify trees with significant problems and also to indicate that the problems have been mitigated or no longer exist.

Another “public tree bill” that has gained a great deal of attention relates to trees along state highways. Essentially, HB 5308, AN ACT CONCERNING VEGETATION MANAGEMENT ALONG STATE HIGHWAYS BY THE DEPARTMENT OF TRANSPORTATION, would require DOT to develop specific guidelines relating to the management of trees and other vegetation along state roads. Included in the provisions of this bill is the requirement that these guidelines be reviewed by a licensed arborist employed by either DOT or DEEP.



MASSACHUSETTS: *Jonathan Webb* jwebb@mountauburn.org

As I write, spring is around the corner. We have seen some dramatic weather fluctuations over the past couple of months. Some days, it can be well below freezing and very soon after, the temperature rises significantly above 32 degrees and things begin to thaw out, only then to plunge back down. The cycle then repeats itself all over again. Many companies look forward to consistent hard ground to move trucks and equipment across lawns without much disruption. This can be challenging with such weather patterns and as we head into spring; the opportunities to get in and out without the use of plywood and the heavy ground protection mats begin to slip away.

The plants this season will most certainly be affected by the weather. Be on the lookout for winter desiccation. Due to the freezing and thawing, once the temperature rises it causes the stomata to open which in turn, releases moisture. The root zone, for the most part, is still frozen and so the rootlets are not able to replenish the water loss. Some species are already showing signs such as *Prunus laurocerasus*, rhododendrons (large and small leaf), *Ilex*, *Pieris* and other broadleaf evergreens. Usually, evergreen leaves or needles hold their green color even after the injury has occurred until warmer temperatures arrive, resulting in delayed browning. Affected needles turn yellow or reddish brown at the tip and die back to the base.

As far as pests go, the winter moth had been spotted flying around back in the middle of November. Fortunately, the numbers reported have been low so hopefully it will not be as much as a problem this spring. Hemlock wooly adelgid has been actively feeding and new egg masses appearing. Imidacloprid and dinotefuran work best as a systemic application and can be introduced into the plant by soil or trunk injections. This time of year may not be conducive for a systemic application. A good alternative would be horticulture oil with a follow-up application of the other.

April will soon be here. This is a month when things begin to speed up and can get a little hectic. So often we are so busy we forget to enjoy a great time of year and before we know it summer is here. Don’t let this happen to you. Have a good spring season.



SOLUTIONS CENTER:

- Tree Inventories
- Urban Forest Management Plans
- Master Plans
- Urban Tree Canopy Studies
- Contract Urban Foresters

CONTACT ME TO LEARN MORE:

Andy Hillman
607.339.3968 | andrew.hillman@davey.com





COMING THIS SPRING...

ARBORJET®
Revolutionary Plant Health Solutions



MAINE: *Mike Hughes* hughesarborandlandmgmt@gmail.com

EAB Update: In late February, the Maine Forest Service, with support of landowners and assistance from Central Maine Power and Lucas Tree Experts, collected branches from ash trees along roadsides in Acton, Lebanon, and Berwick. Forest Service staff peeled the bark off these branches to look for signs of emerald ash borer (EAB). Live EAB larvae were found on two of the trees sampled, one each from the towns of Acton and Berwick. Although these trees still appeared completely healthy, they were infested with EAB.

The Maine Arborist Association (MAA) just held its spring workshop. Melissa LeVangie gave an in-depth look at climbing gear inspections and no doubt left some, if not all, questioning if their gear would pass muster of a close inspection!

Allison Kanoti, our Maine State Forest Entomologist, gave an informative talk about our chief nemesis, the browntail moth. The pest has almost doubled its area of infestation and shows little sign of slowing down. John Pietroski, Manager of Pesticide Programs with the ME Board of Pesticides, provided a rundown of regulations when spraying close to water resources, which in Maine is everywhere.

Steve Newman of Central Maine Power provided a complete overview of safety and hazard concerns, which was very informative and brutally frank. As arborists we were reminded how quickly things can go wrong if we fail to take proximity to utilities seriously, or have developed a false sense of security with plastic line covers! Do not do either.

Kevin Smith of the USDA Forest Service provided a wonderful talk on Tree Structure and Wood Decay. Kevin has a humble and sincere view of trees, our place in the world with them, and our duty to preserve them.

Perhaps most important was the great group of 65 or so attendees, from companies large and small, and municipalities, such as Portland. All asked excellent questions of the speakers and shared some of their own experiences from the field. It takes this type of interaction to truly make a great workshop, and the MAA truly thanks everyone who was there.

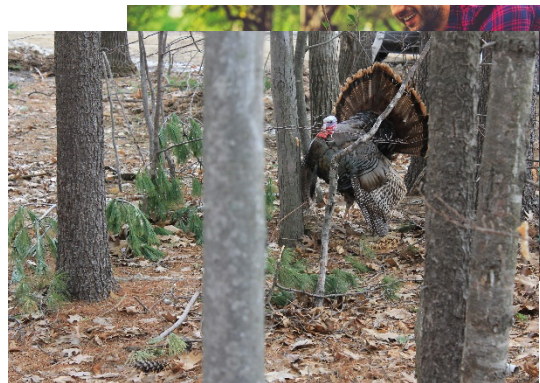


NEW HAMPSHIRE: *Lucas Beane* lbeane@lucastree.com

Welcome to spring, New England ISA members! Although it really hasn't been a severe winter here in the southern part of the state, I always look forward to the longer and warmer days and the snow and ice receding. It's a great time to get back outside and spend some time with the family or pop in for a demonstration to advance your arboricultural skills and knowledge.

Planting

Spring is an excellent time for planting, and planting seedlings can be an inexpensive and fun activity to get kids involved with trees! In New Hampshire, we have the State Forest Nursery in Boscawen, NH, which is "the only bare root tree seedling nursery in New Hampshire and in New England that provides tree and shrub planting stock to landowners and residents for forest plantings and other conservation purposes." The spring seedling sale begins in mid-April and runs through mid-May. The catalog and more information on this nursery can be found at <https://www.nhdfi.org/community/State-forest-nursery>.



✉: heather@newenglandisa.org

☎: 978-844-0441

Outdoor Events

As the weather continues to warm, and you'd like to get the kids outdoors for some fun activities, please check out Discover WILD New Hampshire Day on Saturday, April 20, at NH Fish and Game headquarters. This is a free event and has dozens of interactive activities related to the New Hampshire outdoors that the kids would have a blast with.

<https://www.wildlife.state.nh.us/events/dwnh.html>



Demonstrations

Over the next couple of months, the UNH Cooperative Extension will be holding several pruning demonstrations throughout the state for blueberries, raspberries, grapevines, ornamentals, shrubs, and fruit trees. If you are interested in learning the proper pruning techniques for these plants, take a look at their schedule of events and locations at <https://extension.unh.edu/events>.

I hope everyone has a safe and enjoyable spring! With any luck, all this talk about spring, I have not jinxed New Hampshire with some major late winter

snow storms that will prolong our start of the nice weather. I look forward to checking in with everyone this summer!



Rhode Island: *Scott Wheeler* swheeler@cityofnewport.com

The Rhode Island State Arborist exam will be given on June 28 from 9am to 12pm. Visit: <http://www.dem.ri.gov/programs/forestry/urban-forestry/> for more information on the Arborist Exam, which is based on the updated ISA Manual.

The Trinity Catholic Church and Town of Woonsocket will co-host the 2019 Official State Arbor Day Celebration on Friday, April 26, from 10:30am-12pm. The event will take place in the front of the church at 1225 Park Avenue, Woonsocket, and will feature speakers, school bands, food and refreshments, and the planting of 20 shade trees. This special day to honor the benefits of trees is being sponsored by the RI Department of Environmental Management (RIDEM) and the National Grid Companies. The public is invited to attend.

RIDEM will host a Tree Warden Workshop on April 10, 9:15am-1:00pm at the Cranston Central Library.

RI Tree Council will be conducting a free Tree and Shrubbery Training Workshops at the Franciscan Missionaries of Mary, 399 Fruit Hill Avenue, North Providence, RI, on Friday, April 12, 1pm-4pm and Saturday, April 20, 10am-1pm.

The 54th Tree Stewards Education and Training Course will be held every Tuesday evening 6pm-8pm during the month of May with a skills-building workshop on Saturday, June 1 from 10am – 1pm. Register online at www.ritree.org or by telephone at 401-764-5885. Seating is limited to 35 persons.

Newport, RI, will be celebrating [Newport Arboretum Week](#) from April 22-29. The week of lectures, tree walks and children's events celebrates one of Rhode Island's most historic urban forests, the city's 26 arboreta, and the many citizens and professionals who care for Newport's trees.

✉: heather@newenglandisa.org

☎: 978-844-0441

Summer horticultural interns help Newport Tree Conservancy staff care for over 100 species at The Tree House at Rogers High School (pictured right). The trees they are repotting include specimens from Arnold Arboretum collecting expeditions (part of a recent campaign of exploration and international collaboration to document biodiversity, conserve threatened species, and shape the arboretum's collections for the next century).



VERMONT: *Kevin Shrader* bethshrader514@gmail.com

March in Vermont is mud and maple syrup. Mud season has arrived a little early with most towns marking their roles earlier than normal. We have had several warm days and the sugar houses can be seen working throughout the landscape.

May 2, 2019, is the date for the **Vermont Arbor Day Conference** at the Vermont College of Fine Arts in Montpelier. The Vermont Urban & Community Forestry Program hosts a one-day conference held in honor of Arbor Day and all of the hardworking professionals and stewards that care for our community trees. There are four simultaneous tracks offering a variety of sessions for different audiences. The keynote speaker is author, mountaineer, adventurer, and athlete Jan Reynolds, author of the book *The Glass Summit: One Woman's Epic Journey Breaking Through*. ISA and SAF credits will be available for some sessions. Conference Registration is \$40 before April 18, and \$55 on April 19 and after. Visit <https://vtcommunityforestry.org> to register.

The Vermont Arbor Day Conference welcomes the stewards of Vermont's urban trees and community forests to enhance their technical skills, discuss relevant topics in urban forestry, and network with professionals and volunteers engaged in urban and community forestry. The conference also celebrates Vermont's Arbor Day with a proclamation and recognition of [Vermont Tree Stewards Awards](#) and [Tree City](#), [Tree Line](#), and [Tree Campus](#) designations.

The 2019 Forest Health Informational Meeting will be held on April 18 at Woodstock Union High School in Woodstock, Vermont. No additional information was available, but contact Josh Halman, Forest Health Specialist at Vermont Department of Forests, Parks & Recreation at joshua.halman@vermont.gov. For those who have not attended, this meeting is a great opportunity to get an overview of the state of health of Vermont's forest. Registration is onsite and there is no cost to attend. Pesticide credits are usually available.

THE TREE FUND HIGHLIGHTS

By Heather Leff for Chris Donnelly – NEC-ISA TREE Fund Liaison



Crowning Achievements

Effect of Tree Species on Cooling Complex Urban Environments

In crowded urban settings, planting the right tree in the right place means more than just avoiding power lines and other targets. To Dr. Henrik Sjöman, Swedish University of Agricultural Science (Gothenburg Botanic Garden), it also means knowing the beneficial qualities of individual tree species on the environment. In his research project, “The Role of Tree Species in Cooling the Urban Climate – Application in Tree Planting and Landscape Architecture. Learn more about the impact of

individual tree species on the climate [here](#).

2019 Tour des Trees – September 16-20, 2019

Registration for this year’s Tour is open. Complete details on the 2019 Tour des Trees can be found [here](#).

Lead Donors

We are extremely grateful to the following people and organizations who contributed over \$2,500 to TREE Fund in February 2019:
 BANDIT INDUSTRIES, INC.
 STEVEN GEIST
 INTERNATIONAL SOCIETY OF ARBORICULTURE

Volunteer Spotlight: Dave Leonard

Dave Leonard is a 17-time Tour des Trees rider and a long-term TREE Fund Liaison representing the “small but mighty” Kentucky Chapter of ISA. As we prepare to visit Dave’s home state this year for the first time on the Tour des Trees, he’s been hard at work recruiting his fellow Kentuckians, raising funds (he ran the raffle at the Chapter’s recent annual conference), and serving as an all-around champion for TREE Fund and its work. Our staff team regularly travels the country as part of our community

Quality boots for forestry, safety, law enforcement, rescue services, fire, military and leisure

HAIX® North America Inc.
 2320 Fortune Drive, Suite 120, Lexington KY 40509
 Toll free 866-344-HAIX (4249)

www.haixtreepro.com

engagement efforts, and it’s not unusual that we will run into Dave, typically wearing his Tour des Trees jersey or jacket, at conferences and symposia, continuing his own education to be the best possible arborist that his customers and colleagues could ever wish to hire or recommend. Dave also has a key companion in his support for TREE Fund, as his wife Nancy has designed custom jewelry for sale at the TREE Fund booth at various industry events over the years, with proceeds benefiting our charitable mission.

Free Webinars

May 29, 2019 – 1:00 pm (Eastern) - Impact of Tree Research

June 11, 2019–2:00pm (Eastern)-Remediating Compacted Soils Compromised by Urban Construction

August 29, 2019 – 1:00pm (Eastern) - Can We Vaccinate Trees to Protect Against Diseases?

November 19, 2019 – 2:00pm (Eastern) - Health Benefits of City Trees: Research Evidence and Economic Values

[Click here for the latest issue of the TREE Press](#) or go to www.treefund.org.

✉ : heather@newenglandisa.org

☎ : 978-844-0441



Business strong.

“ Accreditation has helped us attract great people, improved our safety record, and is our business roadmap for the future.”

*Bob Good
Good's Tree Care
Harrisburg, Pennsylvania
Accredited since 2005*



Set your company apart. Get Accredited!

- ▲ Compete among the most professional companies in the field
- ▲ Attract career-driven, loyal employees who take pride in their work
- ▲ Increase profits and reduce insurance rates and other costs

On average accredited companies earn approximately 30% more gross revenue per production employee than a non-accredited TCIA member company.

– Accreditation program statistics

**Contact Charlie Tentas - ctentas@tcia.org
for a free assessment and to see what TCIA Accreditation
can do for your business.**

TREE CARE INDUSTRY ASSOCIATION

800.733.2622 ■ tcia.org ■ Advancing tree care businesses since 1938

Bristol Aggie Arboriculture Update

By Seth Cook, Teacher – Bristol County Agricultural High School

The freshmen students are embarking on their last exploratory rotation before they choose their major vocation. It is a short exploration of our industry, with the intent to create awareness of the many facets of the tree care industry. So far, arbor freshmen have learned to safely climb trees, use chainsaws, and are now learning about diagnosing pest problems and tree care management overall.



The sophomore arbor class is gaining the knowledge and skills necessary to build on in future courses. They're learning tree biology in great depth in order to prepare them for the proper pruning of shade, ornamental and fruit trees in addition to identifying 39 trees. As the class learns to identify and how trees grow they are also being exposed to tree injections.



The juniors are also having a great year building on previous courses in order to evaluate and recognize hazard trees. Tim Armstrong of Bartlett Tree Services gave an excellent presentation on hazard tree evaluation involving demonstrations and comparisons of the Sonar Tomograph and the latest model of the Resistograph. A huge thank you to Tim and Bartlett for their support. After learning the details of hazard evaluation, students learned the possible mitigation strategies using support systems, as well as how to install the various types of systems. Identifying 33 more trees has added to the fun.

The seniors are an amazing group that have well-directed, challenging career goals that are well on their way. Four members of our Arbor Advisory Board came in to school to act as interviewers during the career readiness class. Dave Monroe, Natascha Batchelor, Karen Lyle, and Rob Lyle all volunteered their time to help our kids prepare for life after Bristol Aggie. Thank you to all of you for your time and expertise.



In addition to the immediate career employment and college degrees in Arbor, we're celebrating with Bridget Peacock who has been chosen as the #1 Woman in Leadership and will receive an amazing fully paid scholarship to Paul Smith's College.

It won't be long until they embark on those goals but in the meantime, the seniors are preparing to earn their CDL licenses as well as learn the intricacies of tree removal techniques.

CALL OUT TO STUDENTS!

DO YOU KNOW ABOUT THE SHIGO STUDENT SUPPORT FUND?

The purpose of the fund is to provide grants to students endeavoring to deepen their knowledge of arboriculture through participation in conferences, workshops, and other events – up to \$400 per request

2019 OFFICERS

PRESIDENT – Rick Harper
rharper@eco.umass.edu

PRESIDENT-ELECT – Heather Green
heather.green.94@gmail.com

VICE-PRESIDENT – Sara Sankowich
sankowich@unitil.com

PAST PRESIDENT – Greg Lukos
glukos@hvmaster.com

TREASURER – Dean Charter
dean_charter@verizon.net

SECRETARY – Mollie Freilicher
secretary@newenglandisa.org

ISA CoR REPRESENTATIVE – Anne-Marie Moran
anne.moran@nationalgrid.com

CERTIFICATION LIAISON – Julie Coop
julie.coop@mass.gov

CONNECTICUT REP – Ken Placko
kcplacko@hotmail.com

MAINE REP – Mike Hughes
hughesarborandlandmgmt.com

MASSACHUSETTS REP – Jonathan Webb
jwebb@mountauburn.org

NEW HAMPSHIRE REP – Lucas Beane
lbeane@lucastree.com

RHODE ISLAND REP – Scott Wheeler
swheeler@cityofnewport.com

VERMONT REP – Kevin Shrader
bandkshr@comcast.net

TCC CHAIRPERSON – Bruce Duffy
arboristbduffy@gmail.com

TREE FUND LIAISON – Chris Donnelly
chris.donnelly@ct.gov

NEWSLETTER EDITORS –
Mollie Freilicher & Heather Leff

✉: heather@newenglandisa.org
☎: 978-844-0441

PRESIDENTIAL APPOINTEES -
Kristina Bezanson
kbezanson@umass.edu

Dave Lefcourt
dlefcourt@bcbridgema.gov

Doak Marasco
doak.marasco@davey.com

John Parry
jparry@fs.fed.us

Brian Salas
brian.salas@eversource.com

EXECUTIVE DIRECTOR - Heather Leff
heather@newenglandisa.org

**PROTECTING
THE REPUTATION
OF THE UTILITIES
WE SERVE...**

IT'S PART OF OUR JOB

Nelson
TREE SERVICE, LLC

See the videos
QR code

Vegetation Management Specialists

800-522-4311 | www.nelsontree.com

NEC-ISA 2019 Newsletter Survey

We are seeking feedback about our quarterly newsletter. Please fill out this form and return to NEC-ISA, P.O. Box 435, Norwell, MA, 02061 or fill out our Newsletter Survey ONLINE by April 30th using [THIS LINK](#). One respondent will receive a \$50 Amazon Gift Card*.

*Survey must be complete.

1. **About you.** Tell us a little about yourself. Choose all that apply.

- ISA Certified Arborist
- Certified or Licensed State Arborist
- Company Owner
- Commercial Arborist
- Utility Arborist
- Chapter Sponsor
- Chapter Volunteer
- Chapter BOD or Committee Member
- Other

2. One respondent will be selected to receive a \$50 Amazon Gift Card. If you want to be considered, please provide your name and best contact information (email or phone).

Name: _____

Address: _____

Phone: _____

Email: _____

3. Are you aware that the New England Chapter ISA has a quarterly newsletter?

- Yes
- No

4. If you are aware of the newsletter, do you read it?

- Always
- Frequently
- Sometimes
- Rarely
- Never

5. HOW do you read the newsletter?

- Print
- Desktop or Laptop Computer
- Tablet
- Cell Phone

6. What is your overall satisfaction with the newsletter?

- Very satisfied
- Somewhat satisfied
- Neutral
- Somewhat dissatisfied
- Very dissatisfied

7. If you read the newsletter, are you happy with the current layout or would you like to see a makeover?

- Happy with the current layout
- Would like to see a makeover
- Do not read the newsletter

8. If you wanted a newsletter makeover, please check all the features/upgrades you would like to see:

- More photos
- Magazine-style layout
- Multiple reading options
- PDF option Only
- Print option Only
- Additional written features
- Longer newsletter
- Shorter newsletter

✉ : heather@newenglandisa.org

☎ : 978-844-0441



9. If you want a makeover of the newsletter, would you be willing to pay a higher membership fee to offset the costs associated with the upgrade whether in technology costs or printing and delivering hard copies?
- Yes
 - No
 - I prefer a digital version
 - None of the Above
10. Do you prefer to read the newsletter online or in print?
- Online
 - In Print
11. How relevant do you find the information in the newsletter?
- Very relevant
 - Somewhat relevant
 - Neutral
 - Somewhat irrelevant
 - Very irrelevant
12. Please see the list below of current and potential newsletter sections. Please choose ALL of the items that are important to you to see in the newsletter.
- Schedule of Upcoming Events
 - Event Recaps
 - Informational Articles and Stories
 - Scientific Research Articles
 - Safety Articles
 - Individual State Reports and News
 - Job Postings
 - Member Spotlights and Interviews
 - Company Spotlights
 - Product or Gear Reviews
 - Grant, Award, and Scholarship Announcements
 - Advertiser generated content (neutral features provided by sponsors)
 - Articles that you can read, take a quiz and get a CEU
 - Other
- Comment:
13. What would you like to see in future newsletters?
-
14. Would you be interested in providing content for this newsletter?
- Yes
 - No
 - Maybe
15. TITLE SUGGESTIONS. Whether we revamp our newsletter or not, we want to hear your title suggestions. Let us know what you think the New England Chapter ISA quarterly newsletter should be called. Currently "New England Chapter Quarterly Newsletter"
-
16. QUESTION FOR NEWSLETTER SPONSORS: Would you be willing to pay a little more for your advertising sponsorship if the Newsletter included a Feature Article spot for your company or organization. Articles would be subject matter appropriate, industry relevant, and educational (not sales focused). One feature article would be included annually as part of annual sponsorship.
- Yes
 - No
- Comment:

NEW ENGLAND JOB OPPORTUNITIES

<p>SKILLED CLIMBER LITCHFIELD COUNTY, CT</p>	<p>ARBORISTS, PLANT HEALTHCARE TECHNICIANS, AND TRAINEES FOXBOROUGH, MA</p>	<p>MULTIPLE LANDSCAPE POSITIONS MERRIMACK VALLEY, MA</p>
<p>Arbor Services of CT is a complete tree care company serving Litchfield County for the past 30 years. Our company is seeking a skilled climber with a CDL license. To apply, please visit ArborCT.com/apply-now/ or fax your resume to (860) 868-1940.</p>	<p>Tree Tech is seeking Arborists, Plant Health Care Technicians, & Trainees. For more info, please visit our website or contact John Haehnel by email: johnh@treetechnic.net</p>	<p>SLS Landscape Design & Development is seeking a Design Build Manager, Design Build Crew Leaders, Design Build Crew Members, and a Lawn Care Technician. Call Danielle at 978-948-7701 or email your resume to Danielle@SLS-Landscapes.com</p>
<p>PLANT HEALTH CARE TECHNICIAN SHEFFIELD, MA</p>	<p>SEASONAL TREE PLANTING POSITIONS MULTIPLE, MA</p>	<p>BUCKET TRUCK OPERATOR GLOUCESTER, MA</p>
<p>Race Mountain Tree Service is seeking a Plant Health Care Technician for the 2019 season. Please submit application & references to support@racemountain.com</p>	<p>The Department of Recreation and Conservation is seeking seasonal tree planting positions . To apply go to: www.mass.gov/anf/employment-equal-access-disability/masscareers/masscareers.html</p>	<p>Cape Anne Tree Service is seeking a Bucket Truck Operator. Go to http://capeanntree.com/ to apply.</p>
<p>CLIMBER, PLANT HEALTH CARE TECHNICIAN, AND GROUND WORKER PETERBOROUGH, NH</p>	<p>DISTRICT MANAGER MT. KISCO, NY</p>	<p>VARIOUS POSITIONS NEW YORK, NY</p>
<p>Broad Oak Tree and Shrub Care, Inc. is seeking a Climber, a Plant Healthcare Technician, and a Ground Worker. For more information call or email. 603-673-1513 grow@broadoaktree.com</p>	<p>Davey Tree Expert Co./Care of Trees is seeking a District Manager. Send Resumes directly to: Kristina.Amerson@davey.com</p>	<p>NYC Parks and Rec is always hiring! Checkout job postings at https://www.nycgovparks.org/opportunities/jobs</p>
<p>CLIMBER WOBURN, MA</p>	<p>VIEW DETAILED JOB POSTINGS ON OUR WEBSITE</p>	<p>POST YOUR JOBS HERE</p>
<p>Arbor Care Tree Service is seeking a climber/arborist. Responsible for Tree Climbing, Heavy Equipment Operations. Tree Pruning, Tree Removals, and Plant Health Care Operations. Call our office for an interview at 781-648-1100, fax resume to 781-935-0373, or go to our contact page at https://www.ArborCareTree.com/careers.htm</p>		<p>WANT TO POST A JOB IN OUR NEWSLETTER OR ON OUR WEBSITE?</p> <p>EMAIL: heather@newenglandisa.org</p>



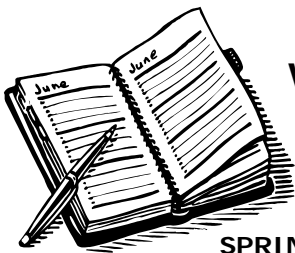
NEC-ISA
 P.O. Box 435
 Norwell, MA 02061

Share your experiences...

Do you have a story to share? Something for our Safety First section? Something else related to arboriculture? We encourage you to submit an article (500 words) for the newsletter. If your article is selected, you will receive a **\$100 thank you!**

WE WANT TO HEAR FROM YOU!

Contact heather@newenglandisa.org for more information.



WHEN & WHERE

Upcoming Calendar SPRING Events 2019

SPRING HAPPENINGS (EARN CEUs)

For complete listing & for more detailed information, visit our CALENDAR at www.newenglandisa.org/events

- Apr 2 [Free Webinar: Dead Ash Dangers and Considerations for Risk and Removal \(Free\)](#)
- Apr 5 [ASTI Aerial Rescue Training Workshop](#) – Bridgeport, CT
- Apr 5 [MCA Exam](#) – Wellesley, MA
- April 10 FREE [Tick Talk Webinar](#)
- Apr 10 [FREE Webinar - Green Readiness, Response, and Recovery](#)
- Apr 11 [Urban Forestry Today Webcast](#)
- Apr 24 [Ticks and Tick-Associated Diseases Conference \(UMass Extension\)](#) – Milford, MA
- Apr 26 Arbor Day in CT, MA, NH, RI
- May 3 Arbor Day in VT
- May 20 Arbor Week in ME

✉: heather@newenglandisa.org
 ☎: 978-844-0441

AREA ISA CERTIFICATION EXAMS

Date	Location	City, State
April 13	UMASS Amherst	Amherst, MA
April 19	UMAINE	Orono, ME
May 31	Masonic Youth Ctr	Warwick, RI
<i>Tree Worker Climbing Specialist Skills Only</i>		
June 1	BCAHS	Dighton, MA
June 14	Town Offices	Norway, ME
July 30	VT Fish & Wildlife	Essex Junction, VT
Aug 23	Town Offices	Norway, ME
Oct 6	Springfield Sheraton	Springfield, MA
Dec 6	UMAINE	Orono, ME

For information and scheduling of ISA exams in New England, contact Julie Coop at julie.coop@mass.gov.

IMPORTANT 2019

NEW ENGLAND CHAPTER DATES

- April 1, 2019** – [Mauget Certified Applicator Training](#), UMass Amherst
- April 19, 2019** – [Ascent Workshop](#), Shelter Tree Care Products, N. Attleboro, MA
- June 1, 2019** – [New England ISA Tree Climbing Championship](#) – Masonic Youth Center, Warwick, RI
- October 6-8, 2019** – New England ISA Conference & Trade Show – [Exhibitors and Sponsors](#)
 ISA Exams
 CPR, AED & First Aid
 Tree Tour
 Mark Chisholm Pre-Conference Workshop

